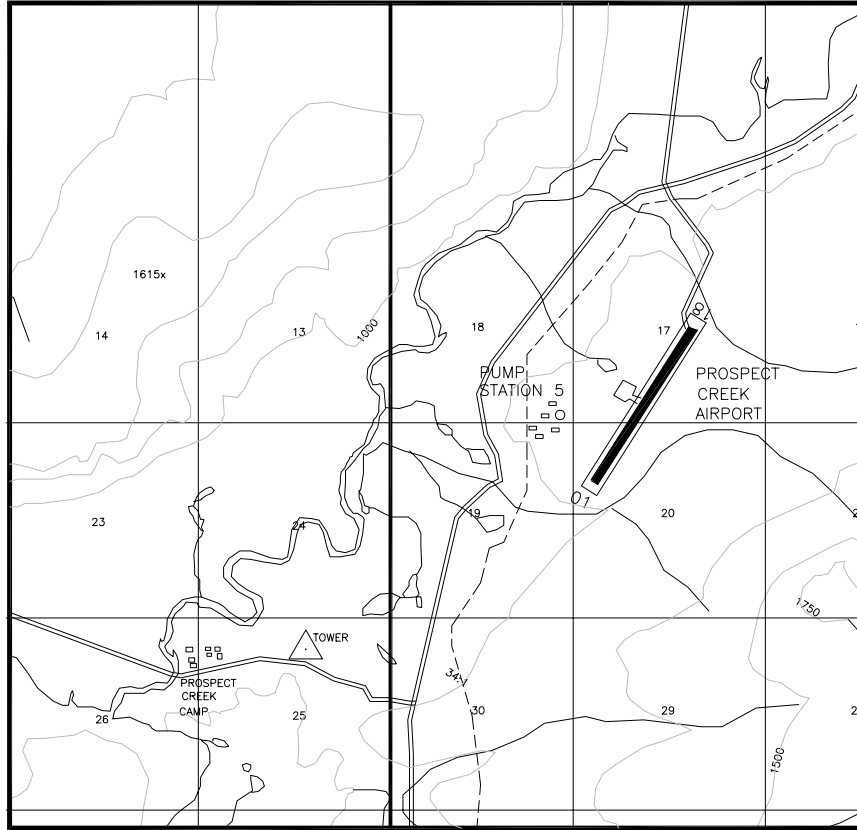


PROSPECT

LOCATION MAP
NO SCALE



VICINITY MAP
S17,18,19,&20
T 23 N, R 14 W
USGS BETTLES (D-2)
FAIRBANKS MERIDIAN
1975



STATE OF ALASKA	
Department of Transportation and Public Facilities 2301 Peger Rd. Fairbanks, Ak 99709	
PROSPECT/61857 AIRPORT IMPROVEMENTS	
PROJECT LOCATION	
PROSPECT, ALASKA	
DATE: 3/8/05	FIGURE 1 OF 3