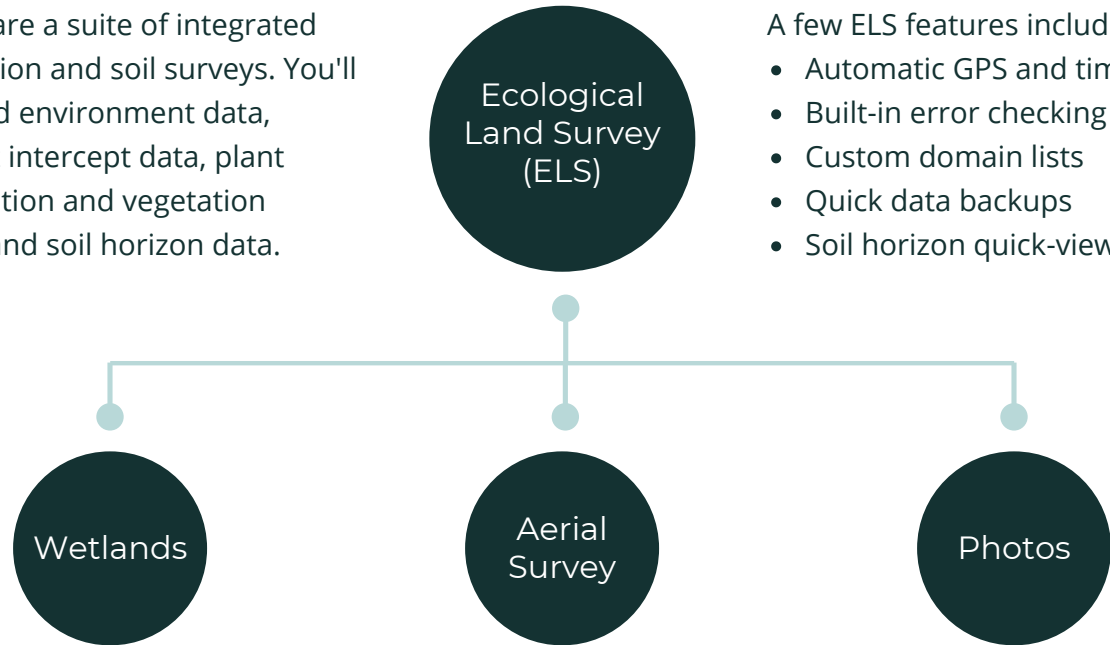


# Simplified Data collection QA/QC Reporting

ABR's ELS apps are a suite of integrated apps for vegetation and soil surveys. You'll be able to record environment data, vegetation point intercept data, plant species composition and vegetation structure data, and soil horizon data.

Whether you're deploying 2 teams or 200, the **ABR Biological Field Survey App Suite** has you covered. Built-in data validation reduces errors in data entry and ensures a high level of consistency in data collection between field teams. And because field data from all your devices are wirelessly uploaded to a central cloud database, you can forget about costly and time consuming data entry.

- A few ELS features include:
- Automatic GPS and timestamp
  - Built-in error checking
  - Custom domain lists
  - Quick data backups
  - Soil horizon quick-view



Our wetlands app seamlessly integrates with our ELS apps and produces US Army Corps of Engineers 404 reports from field data.

Designed to record aerial survey data for land cover map projects, our aerial survey app is also fully ELS integrated.

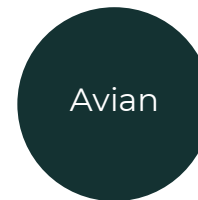
Combine the versatility of your phone or tablet camera with our powerful ELS suite to record field photos and data.

## Contact

**Christ Swingley, M.S.**  
IT Specialist  
cswingley@abrinc.com



Rapidly collect in-flight and ground-based data for both observer and sighting locations on a live map with custom imagery.



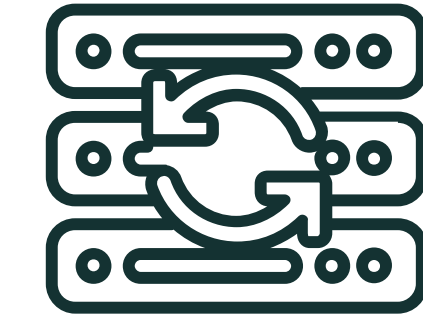
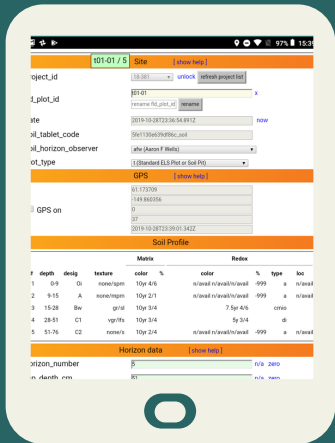
Meeting both ALMS and Breeding Bird Survey protocols, our avian pointcount apps use sensible defaults to automatically calculate fields and streamline data entry.



View real-time, multi-vessel sighting location data from both moving and stationary platforms during your marine mammal protection projects.

# Integrate

With the ABR Biological Field Survey App Suite, you can turn your field observations into usable data automatically and skip the manual data entry. Enjoy our proprietary app interfaces and tools like built-in data validation, custom domain lists, progress tracking and live data review and editing.

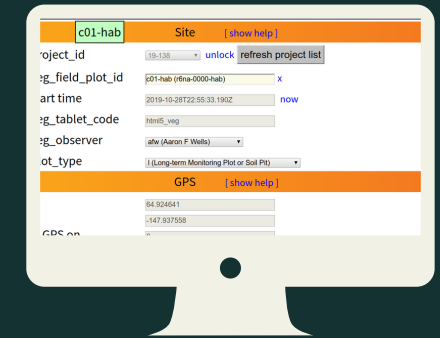
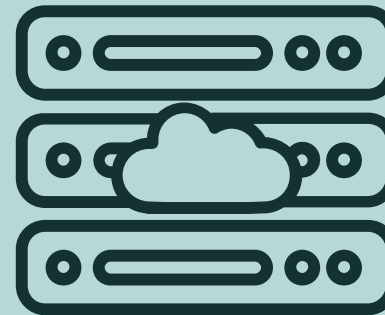


## Synchronize

While you're in the field, all of your enabled devices sync to a central remote server or cloud-based server, depending on wi-fi access. This process automatically backs up your data and allows you to make real-time research decisions.

# Refine

After you return from the field, your data will sync to a secure cloud server, where you can use our web-based QA/QC tools to further refine your data, merge your data into one of our web-based reporting tools to generate a custom report, or take your data offline to optimize your standard workflow.



## Streamline

ABR's App Suite is the best way to make the most of your valuable field time and the easiest way to turn your data into the deliverable you need.

Compatible with Mac iOS — Android — Desktop

ABR is a qualified GSA vendor.